



LED Explosion Proof High Power Lights

www.eneltec-led.com





70W



80W-190W



160W-250W



240-380W



350-480W

Features

Application scenario

This product has good explosion-proof function, suitable for IIA, IIB, IIC explosive gas environment and various inflammable and explosive places, mainly used in railway, electric power, metallurgy, petroleum, petrochemical, chemical, steel, aviation, ship and each Efficient lighting in factories, stations, large facilities, venues and other places.



Product Features

1, Configuration: It adopts imported LED light source, with an average service life of up to 100,000 hours. The power supply adopts wide voltage processing, which can realize constant current output, and has short-circuit and over-voltage protection functions, which greatly prolongs the service life of the lamps.

2, Heat dissipation: Explosion-proof electrical box and lamp holder double cavity design, large space size to ensure the assembly of various large-scale electrical appliances. Excellent heat dissipation performance, so that the LED chip and power supply temperature rise is reasonably controlled within a reasonable range, greatly ensuring the service life of the lamp.

3, Light distribution: Light projection is even and soft, especially suitable for all kinds of need to cast light, floodlights as a fixed lighting.

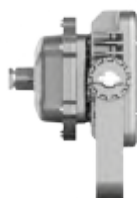
4, Protection: The protection level of the lamp body is IP66, and the anti-corrosion level can reach WF2. The surface of the lamp body will never corrode and never rust.

5, Installation method: Various installation methods such as ceiling, suction wall and U-shaped anti-vibration bracket (angle adjustable) can be used as needed.

MORE DETAILED PICTURES



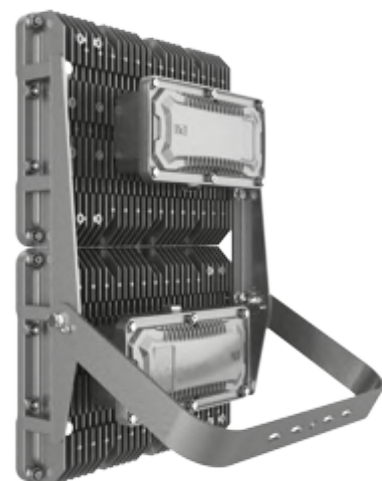
70W



80W-190W



240W-380W



350W-480W



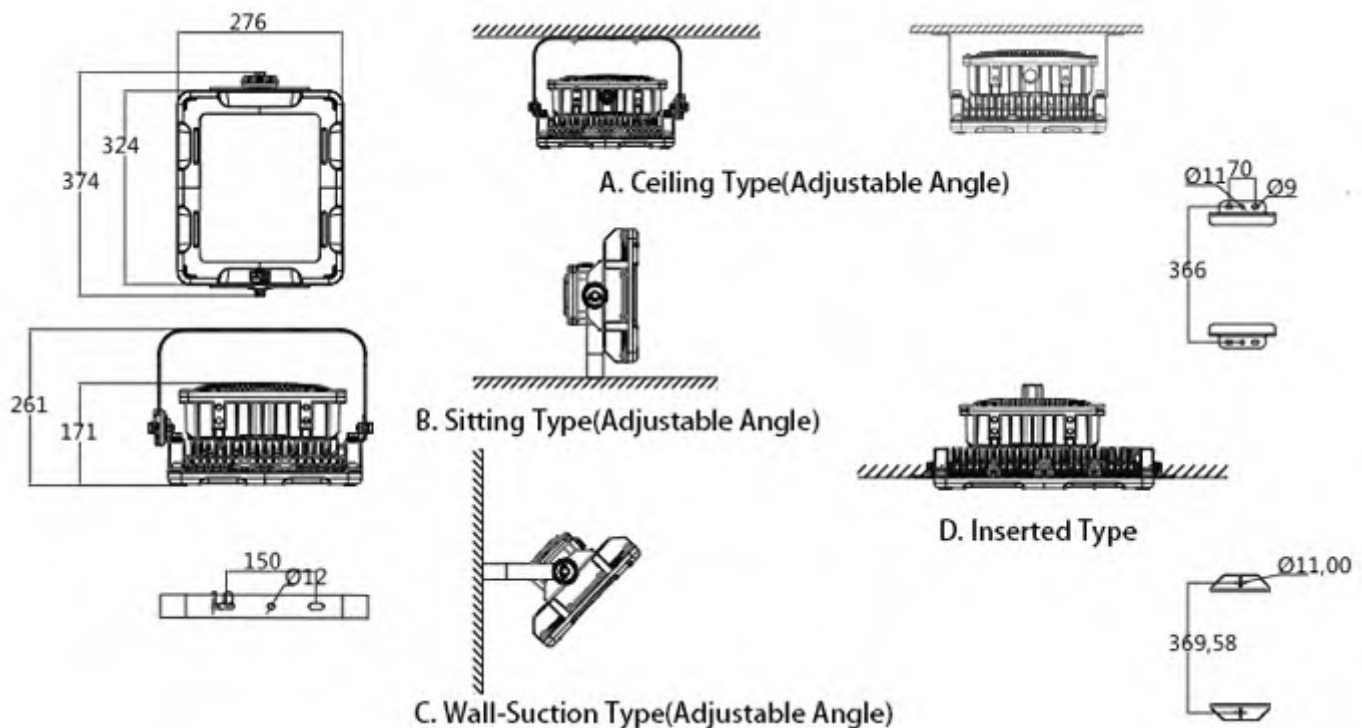
160W-250W



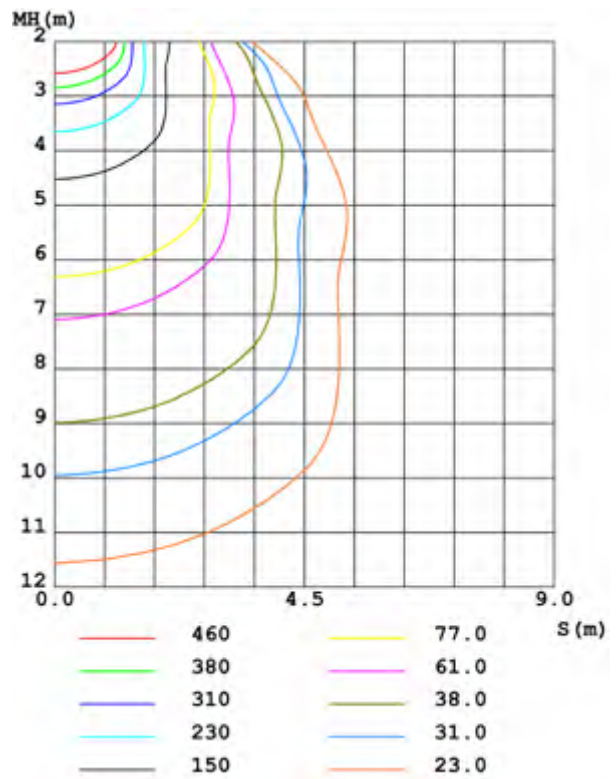
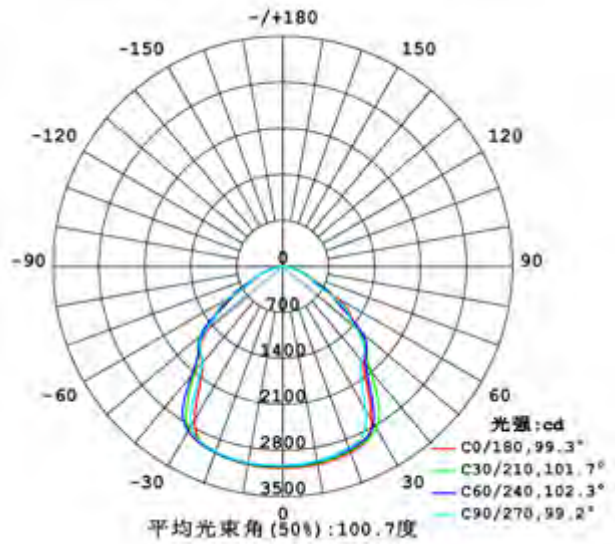
Dimensions

ENEP	PRODUCTS SIZE	PACKING SIZE
70W	300*186*174mm	336*514*240mm/10KG/2PCS
80-190W	374*276*171mm	395*350*215mm/10KG/1PC
160-250W	425*315*165mm	500*400*220mm/13.5KG/1PC
240-380W	552*323*190mm	602*386*271mm/18KG/1PC
350-480W	630*425*195mm	691*491*297mm/20KG/1PC

Installation

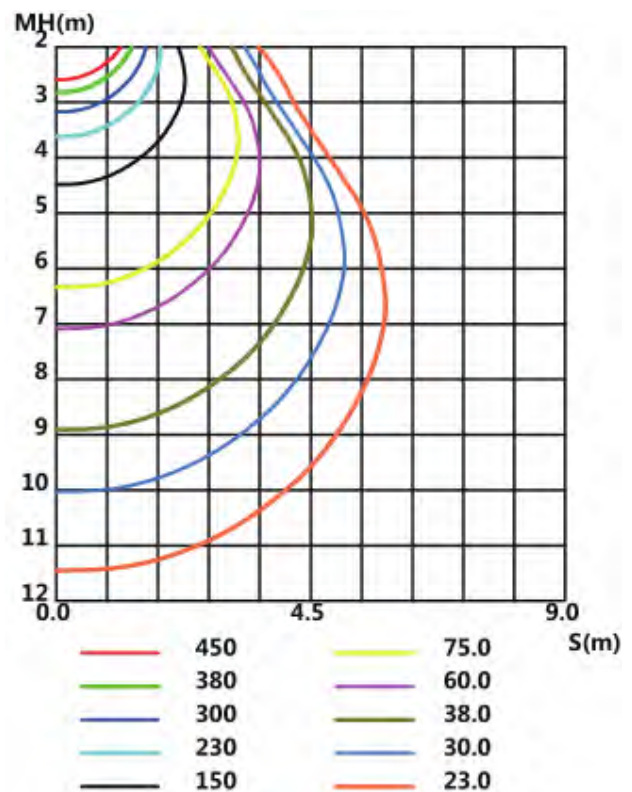
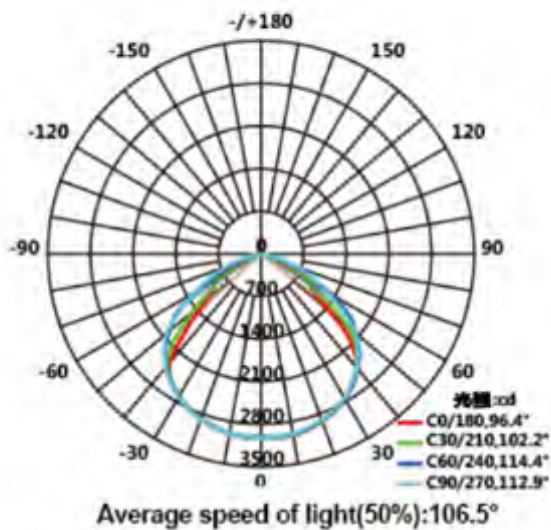


TEST REPORT 70W

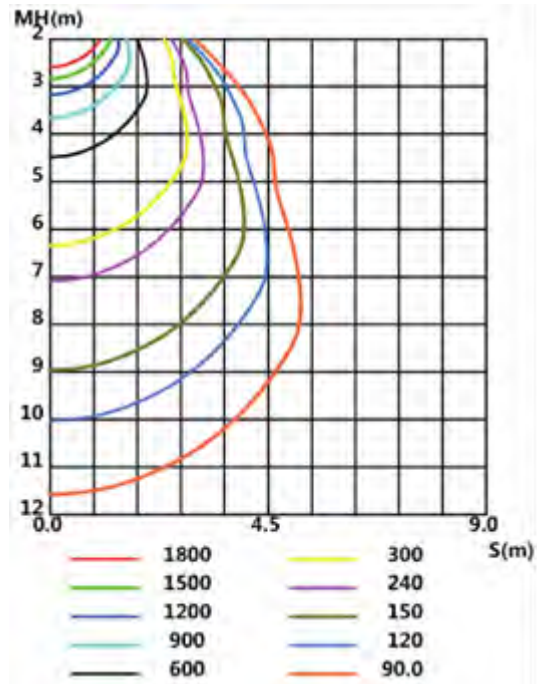
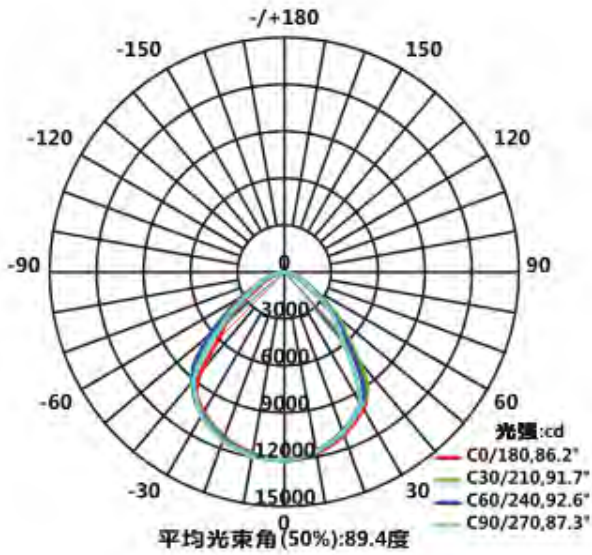


80-190W

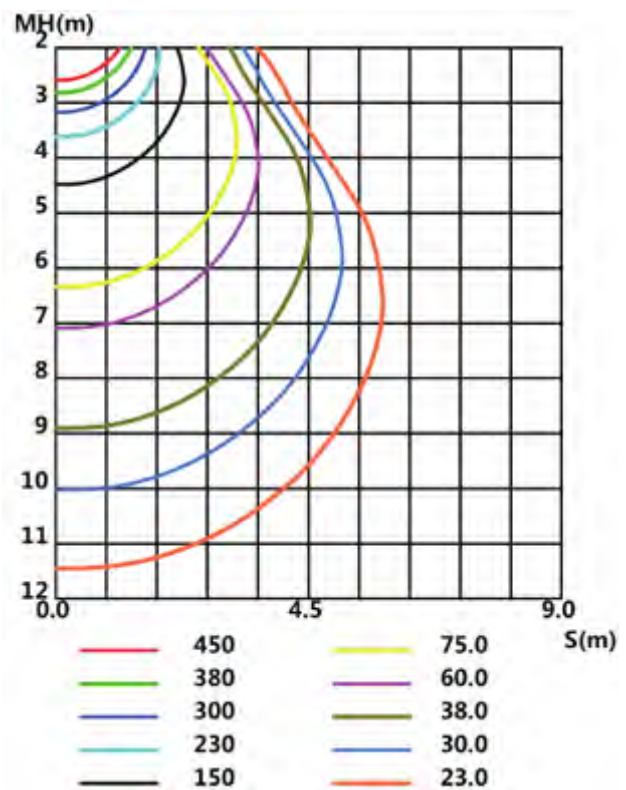
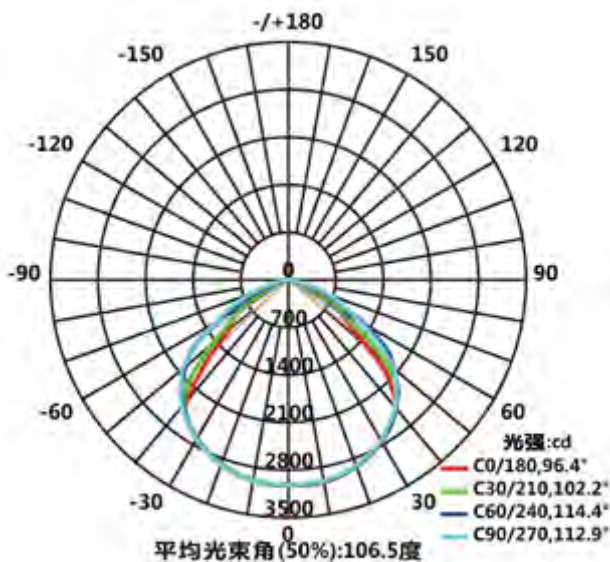
Light Distribution Curve



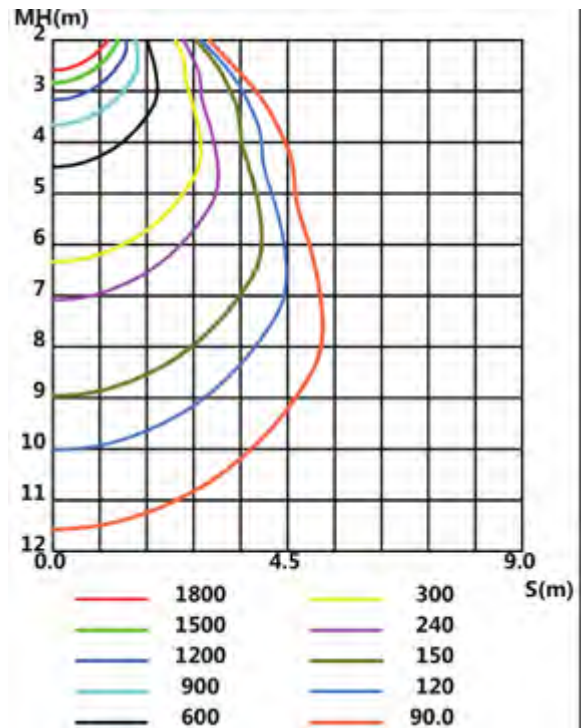
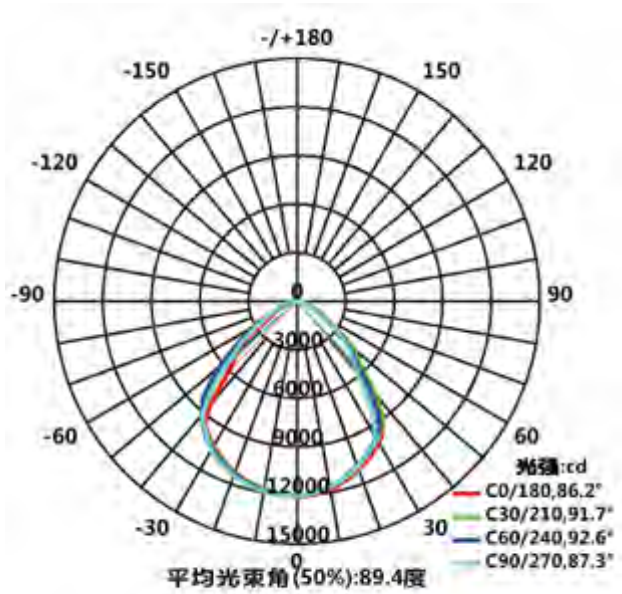
TEST REPORT 160-250W



240-380W



TEST REPORT 350-480W



Packing

