



ENELTEC[®]
brighten your ideas

CONTENTS

P1	Brief Introduction	
P2	History	
P3	Organization	
P4-P5	LED Downlight	
P6	T8 LED Tube	
P7	U-Shaped LED Corn Light	
P8-P9	TUV Listed LED Street Light	
P10-P11	Solar LED Street Light	
P12-P13	TUV Listed LED Gas Station Light	
P14-P15	LED Grow Light	
P16-P17	LED Panel Light	
P18	Integrated Solar LED Street Light	
P19	COB LED Flood Light	
P20	LED R7S Light	
P21	LED G24 Light	
P22	TUV Listed LED Tunnel Light	
P23	Modular LED Tunnel Light	
P24-P26	LED High Bay Light	
P27-P28	LED Street Light	
P29-P31	LED Explosion Proof Light	

BRIEF INTRODUCTION

Eneltec, founded in 1982, is a professional LED lighting manufacturer in China, with more than 30 years' experience in the development and manufacture of lighting products. Working on providing high quality service to the customers, Eneltec is growing more powerful in the lighting industry with the aid of its powerful technology and excellent marketing.

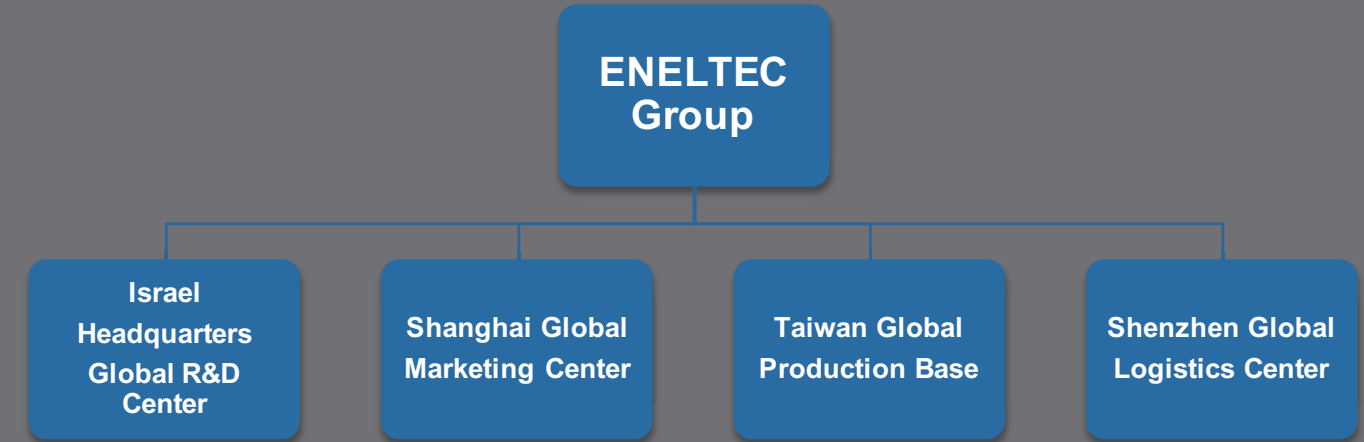
CORE TECHNOLOGY

- Ultra low loss optic design
- LED heat sink system design
- High efficient drive circuit design

HISTORY

2016, Eneltec successfully developed Solar LED Street Lights.
2015, Eneltec successfully developed Integrated Solar LED Street Lights.
2013, Eneltec successfully developed LED Grow Lights.
2011, Eneltec successfully developed LED Explosion Proof Lights.
2010, Eneltec successfully developed LED Panel Lights.
2009, Eneltec (Shanghai) was founded as Global Marketing Center of Eneltec Group.
2008, Eneltec (Israel) was founded as new Global R&D Center.
2007, Eneltec successfully developed LED High Bay Lights.
2006, Eneltec successfully developed LED Flood Lights.
2005, Eneltec successfully developed LED Street Lights.
2004, Eneltec successfully developed LED Downlights.
2003, Eneltec successfully developed LED Light Tubes.
2002, Eneltec successfully developed LED Bulbs.
2001, Eneltec successfully developed LED Spotlights.
1998, Eneltec successfully developed T5 Adapters and greatly promoted energy-saving projects.
1995, Eneltec invested USD 2,000,000 to set up the lighting product testing system, Eneltec Global R&D Center was founded meanwhile.
1993, Eneltec Group was set up and Eneltec (Taiwan) Factory was founded in the same year.
1982, Eneltec was founded, devoting to the R&D of lighting products.

ORGANIZATION





EPISTAR



Ultra Slim LED Downlight

Model No.	Power (W)	Lumen (LM)	Beam Angle	Input Voltage	PF	Color	Product Dimension (mm)	Hole Dimension (mm)
ENDL-3WSMD-R02EE	3	230	120°	85-265VAC	0.5	2800-3200K/ 4000-4500K/ 6000-6500K	Φ90×12	Φ70
ENDL-6WSMD-R02EE	6	470	120°	85-265VAC	0.5		Φ120×12	Φ100
ENDL-9WSMD-R02EE	9	700	120°	85-265VAC	0.5		Φ150×12	Φ130
ENDL-12WSMD-R02EE	12	930	120°	85-265VAC	0.5	2800-3200K/ 4000-4500K/ 6000-6500K	Φ170×12	Φ150
ENDL-15WSMD-R02EE	15	1170	120°	85-265VAC	0.5		Φ190×12	Φ170
ENDL-18WSMD-R02EE	18	1450	120°	85-265VAC	0.5		Φ225×12	Φ200
ENDL-24WSMD-R02EE	24	1920	120°	85-265VAC	0.5	2800-3200K/ 4000-4500K/ 6000-6500K	Φ300×12	Φ275
ENDL-3WSMD-S02EE	3	230	120°	85-265VAC	0.5		90×90×12	70×70
ENDL-6WSMD-S02EE	6	470	120°	85-265VAC	0.5		120×120×12	100×100
ENDL-9WSMD-S02EE	9	700	120°	85-265VAC	0.5	2800-3200K/ 4000-4500K/ 6000-6500K	150×150×12	130×130
ENDL-12WSMD-S02EE	12	930	120°	85-265VAC	0.5		170×170×12	150×150
ENDL-15WSMD-S02EE	15	1170	120°	85-265VAC	0.5		190×190×12	170×170
ENDL-18WSMD-S02EE	18	1450	120°	85-265VAC	0.5	2800-3200K/ 4000-4500K/ 6000-6500K	225×225×12	200×200
ENDL-24WSMD-S02EE	24	1920	120°	85-265VAC	0.5		300×300×12	270×270

LED Ceiling Light

Model No.	Power (W)	Lumen (LM)	Beam Angle	Input Voltage	PF	Color	Product Dimension (mm)
ENDL-6WSMD-R03EE	6	600	120°	85-265VAC	0.5	2800-3200K/ 4000-4500K/ 6000-6500K	Φ120×40
ENDL-12WSMD-R03EE	12	1200	120°	85-265VAC	0.5	2800-3200K/ 4000-4500K/ 6000-6500K	Φ170×40
ENDL-18WSMD-R03EE	18	1800	120°	85-265VAC	0.5	2800-3200K/ 4000-4500K/ 6000-6500K	Φ225×40
ENDL-24WSMD-R03EE	24	2400	120°	85-265VAC	0.5	2800-3200K/ 4000-4500K/ 6000-6500K	Φ300×40
ENDL-6WSMD-S03EE	6	600	120°	85-265VAC	0.5	2800-3200K/ 4000-4500K/ 6000-6500K	120×120×40
ENDL-12WSMD-S03EE	12	1200	120°	85-265VAC	0.5	2800-3200K/ 4000-4500K/ 6000-6500K	170×170×40
ENDL-18WSMD-S03EE	18	1800	120°	85-265VAC	0.5	2800-3200K/ 4000-4500K/ 6000-6500K	225×225×40
ENDL-24WSMD-S03EE	24	2400	120°	85-265VAC	0.5	2800-3200K/ 4000-4500K/ 6000-6500K	300×300×40



EPISTAR



T8 LED Tube



EPISTAR



Model No.	Input Voltage	Lumen (LM)	Power (W)	PF	LED Driver	Beam Angle	Color	Product Dimension (mm)
ENLT-T8060-NI-03S	180-265VAC/ 90-130VAC	720	9	0.5	Non-Isolated Driver	120°	2800-3200K/ 4000-4500K/ 6000-6500K	588 Φ26mm
ENLT-T8090-NI-03S	180-265VAC/ 90-130VAC	1120	14	0.5	Non-Isolated Driver	120°		893 Φ26mm
ENLT-T8120-NI-03S	180-265VAC/ 90-130VAC	1440	18	0.5	Non-Isolated Driver	120°		1198 Φ26mm
ENLT-T8150-NI-03S	180-265VAC/ 90-130VAC	1920	24	0.5	Non-Isolated Driver	120°	2800-3200K/ 4000-4500K/ 6000-6500K	1498 Φ26mm
ENLT-T8240-NI-03S	180-265VAC/ 90-130VAC	3200	40	0.5	Non-Isolated Driver	120°		2398 Φ26mm
ENLT-T8060-I-03E	85-265VAC	945	9	0.9	Isolated Driver	120°	2800-3200K/ 4000-4500K/ 6000-6500K	588 Φ26mm
ENLT-T8090-I-03E	85-265VAC	1470	14	0.9	Isolated Driver	120°		893 Φ26mm
ENLT-T8120-I-03E	85-265VAC	1890	18	0.9	Isolated Driver	120°	2800-3200K/ 4000-4500K/ 6000-6500K	1198 Φ26mm
ENLT-T8150-I-03E	85-265VAC	2520	24	0.9	Isolated Driver	120°		1498 Φ26mm
ENLT-T8240-I-03E	85-265VAC	4200	40	0.9	Isolated Driver	120°		2398 Φ26mm

U-Shaped LED Corn Light



EPISTAR



Model No.	Power (W)	Lumen (LM)	Beam Angle	Input Voltage	PF	Color	Product Dimension (mm)
ENCL-2U3W-03E	3	300	360°	85-265VAC	0.8	2800-3200K/ 4000-4500K/ 6000-6500K	Φ36×106
ENCL-3U5W-03E	5	500	360°	85-265VAC	0.8	2800-3200K/ 4000-4500K/ 6000-6500K	Φ40×113
ENCL-3U7W-03E	7	700	360°	85-265VAC	0.8	2800-3200K/ 4000-4500K/ 6000-6500K	Φ40×132
ENCL-3U9W-03E	9	900	360°	85-265VAC	0.8	2800-3200K/ 4000-4500K/ 6000-6500K	Φ40×143
ENCL-3U12W-03E	12	1200	360°	85-265VAC	0.8	2800-3200K/ 4000-4500K/ 6000-6500K	Φ52×150
ENCL-4U16W-03E	16	1600	360°	85-265VAC	0.8	2800-3200K/ 4000-4500K/ 6000-6500K	Φ58×185
ENCL-4U24W-03E	24	2400	360°	85-265VAC	0.8	2800-3200K/ 4000-4500K/ 6000-6500K	Φ73×230

TUV Listed LED Street Light



PHILIPS
LUMILEDS



Thread the cable by M16 waterproof connector, do not tighten the connector.

Open the electrical box by removing two M5 hexagon screws.








Model No.	Power (W)	Input Voltage	Lumen (LM)	Color	Beam Angle	PF	IP Rating	Product Dimension (mm)
ENSL-40W-01TUVH4	40	AC100-277V DC12/24V	4800	3000K/ 4000K/ 5000K/ 5700K	TypeI,Medium/ TypeII,Medium/ TypeV,Short	0.95	IP66	431*316*136
ENSL-80W-01TUVH4	80	AC100-277V DC24V	9600	3000K/ 4000K/ 5000K/ 5700K	TypeI,Medium/ TypeII,Medium/ TypeV,Short	0.95	IP66	504*316*136
ENSL-120W-01TUVH4	120	AC100-277V	14400	3000K/ 4000K/ 5000K/ 5700K	TypeI,Medium/ TypeII,Medium/ TypeV,Short	0.95	IP66	577*316*136
ENSL-160W-01TUVH4	160	AC100-277V	19200	3000K/ 4000K/ 5000K/ 5700K	TypeI,Medium/ TypeII,Medium/ TypeV,Short	0.95	IP66	650*316*136
ENSL-200W-01TUVH4	200	AC100-277V	24000	3000K/ 4000K/ 5000K/ 5700K	TypeI,Medium/ TypeII,Medium/ TypeV,Short	0.95	IP66	723*316*136
ENSL-50W-01TUVH5	50	AC100-277V DC12/24V	5750	3000K/ 4000K/ 5000K/ 5700K	TypeI,Medium/ TypeII,Medium/ TypeV,Short	0.95	IP66	431*316*136
ENSL-100W-01TUVH5	100	AC100-277V DC24V	11500	3000K/ 4000K/ 5000K/ 5700K	TypeI,Medium/ TypeII,Medium/ TypeV,Short	0.95	IP66	504*316*136
ENSL-150W-01TUVH5	150	AC100-277V	17250	3000K/ 4000K/ 5000K/ 5700K	TypeI,Medium/ TypeII,Medium/ TypeV,Short	0.95	IP66	577*316*136
ENSL-200W-01TUVH5	200	AC100-277V	23000	3000K/ 4000K/ 5000K/ 5700K	TypeI,Medium/ TypeII,Medium/ TypeV,Short	0.95	IP66	650*316*136
ENSL-240W-01TUVH5	240	AC100-277V	27600	3000K/ 4000K/ 5000K/ 5700K	TypeI,Medium/ TypeII,Medium/ TypeV,Short	0.95	IP66	723*316*136



Flexible Installations

Solar LED Street Light



Item	ENSL-20W-S04	ENSL-30W-S04	ENSL-40W-S04	ENSL-50W-S04	ENSL-60W-S04	ENSL-70W-S04	ENSL-80W-S04	ENSL-100W-S04	ENSL-120W-S04	Warranty
 LED Street Light	20W	30W	40W	50W	60W	70W	80W	100W	120W	3 Years
Power	20W	30W	40W	50W	60W	70W	80W	100W	120W	
Voltage	12VDC	12VDC	12VDC	24VDC	24VDC	24VDC	24VDC	24VDC	24VDC	
Lumen	2400lm	3600lm	4800lm	6000lm	7200lm	8400lm	9600lm	12000lm	14400lm	
Light Efficiency	120lm/W									
Color	3000K/4000K/6000K									
CRI	80									
Beam Angle	140° * 60°									
LED Chips	Philips									
IP Rating	IP66									
Lifespan	50,000 Hrs									
 Solar Panel	high-efficiency crystalline PV module									
Type	high-efficiency crystalline PV module									
Specification	70Wp 17V	100Wp 17V	140Wp 17V	180Wp 35.5V	200Wp 36.5V	2pcs*120Wp 17.5V	2pcs*130Wp 17.5V	2pcs*150Wp 17.5V	2pcs*180Wp 35.5V	5 Years
IP Rating	IP65									
Lifespan	25 Years									
 Controller	12V/24V auto-sensing, 10A; light/time intelligent control, high-efficient and accurate charging control									
Specification	12V/24V auto-sensing, 10A; light/time intelligent control, high-efficient and accurate charging control									20A
IP Rating	IP68									
Lifespan	10 Years									
 Battery	solar special use valve-regulated fully sealed lead-acid battery, deep cycle, free maintenance type									
Type	solar special use valve-regulated fully sealed lead-acid battery, deep cycle, free maintenance type									
Specification	12V65AH	12V100AH	12V150AH	2pcs* 12V85AH	2pcs* 12V100AH	2pcs* 12V120AH	2pcs* 12V130AH	2pcs* 12V130AH	2pcs* 12V170AH	2 Years
Lifespan	5-6Years									
 Pole	Q235 steel grade; hot-dip galvanized and spray coated treatment, Resistant to Wind $\geq 160\text{KM/H}$									
Specification	Q235 steel grade; hot-dip galvanized and spray coated treatment, Resistant to Wind $\geq 160\text{KM/H}$									
Height	4m	5m	6m	7m	8m	8m	8m	9m	10m	5 Years
Lifespan	20 Years									

TUV Listed LED Gas Station Light

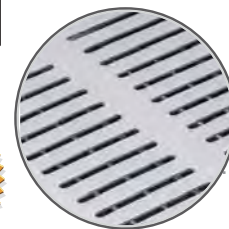
Exclusive Appearance Design



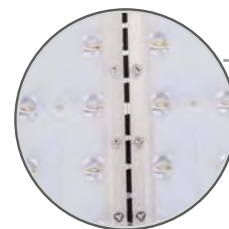
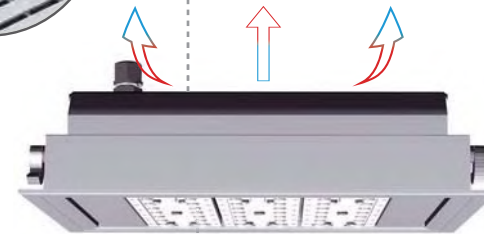
PHILIPS
LUMILEDS



Model No.	Input Voltage	Power (W)	Lumen (LM)	Beam Angle	CRI	Color	IP Rating	Product Dimension (mm)
ENEP-40W-04TUV	AC100-277V	40	4400	60°/90°/110°	70	3000K/ 4000K/ 5000K/ 5700K	IP66	231×316×120
ENEP-80W-04TUV	AC100-277V	80	8800	60°/90°/110°	70	3000K/ 4000K/ 5000K/ 5700K	IP66	304×316×120
ENEP-120W-04TUV	AC100-277V	120	13200	60°/90°/110°	70	3000K/ 4000K/ 5000K/ 5700K	IP66	377×316×120
ENEP-160W-04TUV	AC100-277V	160	17600	60°/90°/110°	70	3000K/ 4000K/ 5000K/ 5700K	IP66	450×316×120



Enclosed but ventilation back design can not only keep the heat dissipation but also avoid laceration.



Gaps between the modules will increase the thermal dissipation rate and solve the problem of dust deposition.



Professional lens design with 60°, 90° and 110° optional.



Convenient connection, neat, clean and efficiency.



Use waterproof connector to fix the input cables, easy to make maintenance.



The exquisite and innovated frame holder not only makes the installation more simple but also firmer.

Apollo LED Grow Light



Model No.	Power (W)	Lumen (LM)	Beam Angle	Input Voltage	Par (umol)	Color	Product Dimension (mm)
ENGL-AP4-01	136	2400	90°/120°	85-264VAC	238/1m 120/1.5m	630NM/460NM Red/Blue	270×283×85
ENGL-AP6-01	209	3600	90°/120°	85-264VAC	310/1m 170/1.5m	630NM/460NM Red/Blue	383×283×85
ENGL-AP8-01	278	4800	90°/120°	85-264VAC	570/1m 320/1.5m	630NM/460NM Red/Blue	496×283×85
ENGL-AP10-01	364	6000	90°/120°	85-264VAC	410/1m 210/1.5m	630NM/460NM Red/Blue	609×283×85
ENGL-AP12-01	430	7200	90°/120°	85-264VAC	656/1m 353/1.5m	630NM/460NM Red/Blue	722×283×85
ENGL-AP16-01	580	9600	90°/120°	85-264VAC	700/1m 420/1.5m	630NM/460NM Red/Blue	948×283×85
ENGL-AP18-01	644	10800	90°/120°	85-264VAC	700/1m 420/1.5m	630NM/460NM Red/Blue	1061×283×85
ENGL-AP20-01	725	12000	90°/120°	85-264VAC	700/1m 420/1.5m	630NM/460NM Red/Blue	1174×283×85

COB LED Grow Light



Model No.	Power (W)	Lumen (LM)	Beam Angle	Input Voltage	Par Value/ 200mm (Umol)	Color	Product Dimension (mm)
ENGL-S1-01	136	1820	60°	100-240VAC	615.2	Full Spectrum	190*190*60
ENGL-S2-01	209	3540	60°	100-240VAC	941.2	Full Spectrum	125*345*70
ENGL-S4-01	278	7280	60°	100-240VAC	2440.31	Full Spectrum	290*290*60
ENGL-S6-01	364	10920	60°	100-240VAC	2453.8	Full Spectrum	250*500*60
ENGL-S9-01	430	16380	60°	100-240VAC	4571.2	Full Spectrum	500*500*60
ENGL-S16-01	580	29120	60°	100-240VAC	8966.1	Full Spectrum	650*650*60



Spring Mounted LED Panel

Model No.	Input Voltage	Power (W)	Lumen (Lm)	PF	Beam Angle	Color	IP Rating	Product Dimension (mm)
ENPL-2020-12W-02	100-240VAC	12	780	0.9	120°	3000K/ 4000K/ 5000K/ 6000K	IP44	202×202×19
ENPL-3030-18W-02	100-240VAC	18	1314	0.9	120°		IP44	302×302×19
ENPL-3060-24W-02	100-240VAC	24	1800	0.9	120°	3000K/ 4000K/ 5000K/ 6000K	IP44	302×602×19
ENPL-6060-36W-02	100-240VAC	36	3024	0.9	120°		IP44	602×602×19
ENPL-6262-36W-02	100-240VAC	36	3024	0.9	120°	3000K/ 4000K/ 5000K/ 6000K	IP44	622×622×19
ENPL-20120-36W-02	100-240VAC	36	2808	0.9	120°		IP44	202×1202×19
ENPL-30120-36W-02	100-240VAC	36	2880	0.9	120°	3000K/ 4000K/ 5000K/ 6000K	IP44	302×1202×19
ENPL-60120-48W-02	100-240VAC	48	3744	0.9	120°		IP44	602×1202×19



Ultra Slim LED Panel

Model No.	Input Voltage	Power (W)	Lumen (Lm)	PF	Beam Angle	Color	IP Rating	Product Dimension (mm)
ENPL-2020-12W-01	100-240VAC	12	744	0.9	120°	3000K/ 4000K/ 5000K/ 6000K	IP44	195×195×9
ENPL-3030-18W-01	100-240VAC	18	1242	0.9	120°		IP44	295×295×9
ENPL-3060-24W-01	100-240VAC	24	1704	0.9	120°	3000K/ 4000K/ 5000K/ 6000K	IP44	295×595×9
ENPL-6060-36W-01	100-240VAC	36	2880	0.9	120°		IP44	595×595×9
ENPL-6262-36W-01	100-240VAC	36	2880	0.9	120°	3000K/ 4000K/ 5000K/ 6000K	IP44	620×620×9
ENPL-20120-36W-01	100-240VAC	36	2664	0.9	120°		IP44	195×1195×9
ENPL-30120-36W-01	100-240VAC	36	2736	0.9	120°	3000K/ 4000K/ 5000K/ 6000K	IP44	295×1195×9
ENPL-60120-48W-01	100-240VAC	48	3552	0.9	120°		IP44	595×1195×9

Integrated Solar LED Street Light



PHILIPS
LUMILEDS



Model No.	Power (W)	Solar	Battery	Lumen (LM)	Color	Beam Angle	IP Rating	Product Dimension (mm)
ENSL-2008-05	8	20W 18V	9AH 12V	900-950	3000K/ 4000K/ 5000K 6000K	120°	IP65	480*360*50
ENSL-2512-05	12	25W 18V	10AH 12V	1200-1280		120°	IP65	480*360*50
ENSL-3015-05	15	30W 18V	13AH 12V	1500-1580	3000K/ 4000K/ 5000K 6000K	120°	IP65	600*380*50
ENSL-6530-05	30	65W 18V	30AH 12V	3000-4000		120°	IP65	1210*340*45
ENSL-7040-05	40	70W 18V	36AH 12V	4000-4300	3000K/ 4000K/ 5000K 6000K	120°	IP65	1210*340*45
ENSL-8550-05	50	85W 18V	44AH 12V	6000-7000		120°	IP65	1210*460*45
ENSL-8560-05	60	85W 18V	44AH 12V	6500-7500	3000K/ 4000K/ 5000K 6000K	120°	IP65	1210*460*45
ENSL-9070-05	70	90W 18V	50AH 12V	7500-8000		120°	IP65	1210*460*45
ENSL-10080-05	80	100W 18V	60AH 12V	8500-9000		120°	IP65	1210*460*45

COB LED Flood Light



Model No.	Power (W)	Lumen (LM)	Beam Angle	Input Voltage	PF	Color	IP Rating	Product Dimension (mm)
ENFL-10W-01S	10	1000	60°/120°	85-265VAC	>0.5	2700-3200K/ 4000-4500K/ 6000-6500K	IP65	130*110*82
ENFL-20W-01S	20	2000	60°/120°	85-265VAC	>0.9		IP65	180*157*100
ENFL-30W-01S	30	3000	60°/120°	85-265VAC	>0.9	2700-3200K/ 4000-4500K/ 6000-6500K	IP65	225*197*122
ENFL-50W-01S	50	5000	60°/120°	85-265VAC	>0.9		IP65	288*235*132
ENFL-70W-01S	70	7000	60°/120°	85-265VAC	>0.9	2700-3200K/ 4000-4500K/ 6000-6500K	IP65	290*370*120
ENFL-100W-01S	100	10000	60°/120°	85-265VAC	>0.9		IP65	300*360*110
ENFL-120W-01S	120	12000	120°	85-265VAC	>0.9	2700-3200K/ 4000-4500K/ 6000-6500K	IP65	405*320*140
ENFL-150W-01S	150	15000	120°	85-265VAC	>0.9		IP65	405*320*140
ENFL-100W-02S	100	10000	60°/120°	85-265VAC	>0.9	2700-3200K/ 4000-4500K/ 6000-6500K	IP65	420*325*200
ENFL-120W-02S	120	12000	60°/120°	85-265VAC	>0.9		IP65	420*325*200
ENFL-150W-03S	150	15000	60°/120°	85-265VAC	>0.9	2700-3200K/ 4000-4500K/ 6000-6500K	IP65	420*325*200
ENFL-200W-03S	200	20000	60°/120°	85-265VAC	>0.9		IP65	420*325*200



EPISTAR





LED R7S Light

Model No.	Power (W)	Lumen (LM)	Beam Angle	Base	Input Voltage	PF	Color	Product Dimension (mm)
ENSP-5WR7S-02	5	430	200°	R7S	85-265VAC	0.6	2800-3200K/ 4000-4500K/ 6000-6500K	78×54×35
ENSP-5WR7S-02D	5	430 Dimmable	200°	R7S	85-265VAC	0.6	2800-3200K/ 4000-4500K/ 6000-6500K	78×54×35
ENSP-8WR7S-02	8	640	200°	R7S	85-265VAC	0.95	2800-3200K/ 4000-4500K/ 6000-6500K	118×54×35
ENSP-8WR7S-02D	8	640 Dimmable	200°	R7S	85-265VAC	0.95	2800-3200K/ 4000-4500K/ 6000-6500K	118×54×35
ENSP-10WR7S-02	10	830	200°	R7S	85-265VAC	0.95	2800-3200K/ 4000-4500K/ 6000-6500K	118×54×35
ENSP-10WR7S-02D	10	830 Dimmable	200°	R7S	85-265VAC	0.95	2800-3200K/ 4000-4500K/ 6000-6500K	118×54×35
ENSP-12WR7S-02	12	1010	200°	R7S	85-265VAC	0.95	2800-3200K/ 4000-4500K/ 6000-6500K	138×54×35
ENSP-12WR7S-02D	12	1010 Dimmable	200°	R7S	85-265VAC	0.95	2800-3200K/ 4000-4500K/ 6000-6500K	138×54×35
ENSP-13WR7S-02	13	1040	200°	R7S	85-265VAC	0.95	2800-3200K/ 4000-4500K/ 6000-6500K	189×54×35
ENSP-13WR7S-02D	13	1040 Dimmable	200°	R7S	85-265VAC	0.95	2800-3200K/ 4000-4500K/ 6000-6500K	189×54×35
ENSP-15WR7S-02	15	1320	200°	R7S	85-265VAC	0.95	2800-3200K/ 4000-4500K/ 6000-6500K	189×54×35
ENSP-15WR7S-02D	15	1320 Dimmable	200°	R7S	85-265VAC	0.95	2800-3200K/ 4000-4500K/ 6000-6500K	189×54×35

EPISTAR



LED G24 Light

Model No.	Power (W)	Lumen (LM)	Beam Angle	Base	Input Voltage	PF	Color	Product Dimension (mm)
ENSP-6WG24-02	6	530	120°	G24	85-265VAC	0.6	2800-3200K/ 4000-4500K/ 6000-6500K	35×35×120
ENSP-6WG24-02D	6	530 Dimmable	120°	G24	85-265VAC	0.6	2800-3200K/ 4000-4500K/ 6000-6500K	35×35×120
ENSP-6WE27-02	6	530	120°	E27	85-265VAC	0.6	2800-3200K/ 4000-4500K/ 6000-6500K	35×35×127
ENSP-6WE27-02D	6	530 Dimmable	120°	E27	85-265VAC	0.6	2800-3200K/ 4000-4500K/ 6000-6500K	35×35×127
ENSP-7WG24-02A	7	680	120°	G24	85-265VAC	0.95	2800-3200K/ 4000-4500K/ 6000-6500K	35×35×120
ENSP-7WG24-02AD	7	680 Dimmable	120°	G24	85-265VAC	0.95	2800-3200K/ 4000-4500K/ 6000-6500K	35×35×120
ENSP-7WE27-02A	7	680	120°	E27	85-265VAC	0.95	2800-3200K/ 4000-4500K/ 6000-6500K	35×35×127
ENSP-7WE27-02AD	7	680 Dimmable	120°	E27	85-265VAC	0.95	2800-3200K/ 4000-4500K/ 6000-6500K	35×35×127
ENSP-10WG24-02	10	900	120°	G24	85-265VAC	0.95	2800-3200K/ 4000-4500K/ 6000-6500K	35×35×160
ENSP-10WG24-02D	10	900 Dimmable	120°	G24	85-265VAC	0.95	2800-3200K/ 4000-4500K/ 6000-6500K	35×35×160
ENSP-10WE27-02	10	900	120°	E27	85-265VAC	0.95	2800-3200K/ 4000-4500K/ 6000-6500K	35×35×166
ENSP-10WE27-02D	10	900 Dimmable	120°	E27	85-265VAC	0.95	2800-3200K/ 4000-4500K/ 6000-6500K	35×35×166
ENSP-12WG24-02A	12	1080	120°	G24	85-265VAC	0.95	2800-3200K/ 4000-4500K/ 6000-6500K	35×35×160
ENSP-12WG24-02AD	12	1080 Dimmable	120°	G24	85-265VAC	0.95	2800-3200K/ 4000-4500K/ 6000-6500K	35×35×160
ENSP-12WE27-02A	12	1080	120°	E27	85-265VAC	0.95	2800-3200K/ 4000-4500K/ 6000-6500K	35×35×166
ENSP-12WE27-02AD	12	1080 Dimmable	120°	E27	85-265VAC	0.95	2800-3200K/ 4000-4500K/ 6000-6500K	35×35×166



EPISTAR



TUV Listed LED Tunnel Light



PHILIPS
LUMILEDS



Model No.	Input Voltage	Power (W)	Lumen (LM)	Beam Angle	CRI	Color	IP Rating	Product Dimension (mm)
ENTL-40W-04TUVH4	AC100-277V	40	4800	60°/90°/110°	>70	3000K/ 4000K/ 5000K/ 5700K	IP66	293*340*136
ENTL-80W-04TUVH4	AC100-277V	80	9600	60°/90°/110°	>70	3000K/ 4000K/ 5000K/ 5700K	IP66	336*340*136
ENTL-120W-04TUVH4	AC100-277V	120	14400	60°/90°/110°	>70	3000K/ 4000K/ 5000K/ 5700K	IP66	439*340*136
ENTL-160W-04TUVH4	AC100-277V	160	19200	60°/90°/110°	>70	3000K/ 4000K/ 5000K/ 5700K	IP66	512*340*136
ENTL-200W-04TUVH4	AC100-277V	200	24000	60°/90°/110°	>70	3000K/ 4000K/ 5000K/ 5700K	IP66	585*340*136
ENTL-50W-04TUVH5	AC100-277V	50	5750	60°/90°/110°	>70	3000K/ 4000K/ 5000K/ 5700K	IP66	293*340*136
ENTL-100W-04TUVH5	AC100-277V	100	11500	60°/90°/110°	>70	3000K/ 4000K/ 5000K/ 5700K	IP66	336*340*136
ENTL-150W-04TUVH5	AC100-277V	150	17250	60°/90°/110°	>70	3000K/ 4000K/ 5000K/ 5700K	IP66	439*340*136
ENTL-200W-04TUVH5	AC100-277V	200	23000	60°/90°/110°	>70	3000K/ 4000K/ 5000K/ 5700K	IP66	512*340*136
ENTL-240W-04TUVH5	AC100-277V	240	27600	60°/90°/110°	>70	3000K/ 4000K/ 5000K/ 5700K	IP66	585*340*136

Modular LED Tunnel Light



PHILIPS
LUMILEDS



Model No.	Input Voltage	Power (W)	Lumen (LM)	Beam Angle	CRI	Color	IP Rating	Product Dimension (mm)
ENTL-50W-05MW	85-265VAC	50	6000	140°H x 75°V	80	3000K/ 4000K/ 5000K/ 6000K	IP65	304*262* 88.8
ENTL-100W-05MW	85-265VAC	100	12000	140°H x 75°V	80	3000K/ 4000K/ 5000K/ 6000K	IP65	304*262* 88.8
ENTL-150W-05MW	85-265VAC	150	18000	140°H x 75°V	80	3000K/ 4000K/ 5000K/ 6000K	IP65	304*354* 88.8
ENTL-200W-05MW	85-265VAC	200	24000	140°H x 75°V	80	3000K/ 4000K/ 5000K/ 6000K	IP65	304*446* 88.8
ENTL-240W-05MW	85-265VAC	240	28800	140°H x 75°V	80	3000K/ 4000K/ 5000K/ 6000K	IP65	304*538* 88.8
ENTL-300W-05MW	85-265VAC	300	36000	140°H x 75°V	80	3000K/ 4000K/ 5000K/ 6000K	IP65	304*630* 88.8
ENTL-350W-05MW	85-265VAC	350	42000	140°H x 75°V	80	3000K/ 4000K/ 5000K/ 6000K	IP65	350*722* 88.8



PHILIPS
LUMILEDS



UFO LED High Bay Light

Model No.	Power (W)	Lumen (LM)	Beam Angle	Input Voltage	PF	Color	IP Rating	Product Dimension (mm)
ENHB-100W-05MW	100	12000	120°	85-265VAC	0.95	3000K/ 4000K/ 5000K/ 6000K	IP65	Ø280*H165
ENHB-120W-05MW	120	14400	120°	85-265VAC	0.95	3000K/ 4000K/ 5000K/ 6000K	IP65	Ø320*H179
ENHB-150W-05MW	150	18000	120°	85-265VAC	0.95	3000K/ 4000K/ 5000K/ 6000K	IP65	Ø320*H179
ENHB-200W-05MW	200	24000	120°	85-265VAC	0.95	3000K/ 4000K/ 5000K/ 6000K	IP65	Ø400*H208
ENHB-240W-05MW	240	28800	120°	85-265VAC	0.95	3000K/ 4000K/ 5000K/ 6000K	IP65	Ø400*H208

COB LED High Bay Light

Model No.	Power (W)	Lumen (LM)	Beam Angle	Input Voltage	PF	Color	IP Rating	Product Dimension (mm)
ENHB-60W-04PM	60	7200	45°/60°/ 90°/120°	85-265VAC	0.95	3000K/ 4000K/ 5000K/ 6000K	IP65	45°:Φ370×H442 60°:Φ350×H418 90°:Φ350×H398 120°:Φ435×H372
ENHB-80W-04PM	80	9600	45°/60°/ 90°/120°	85-265VAC	0.95	3000K/ 4000K/ 5000K/ 6000K	IP65	
ENHB-100W-04PM	100	12000	45°/60°/ 90°/120°	85-265VAC	0.95	3000K/ 4000K/ 5000K/ 6000K	IP65	45°:Φ370×H480 60°:Φ350×H455 90°:Φ350×H435 120°:Φ435×H410
ENHB-120W-04PM	120	14400	45°/60°/ 90°/120°	85-265VAC	0.95	3000K/ 4000K/ 5000K/ 6000K	IP65	
ENHB-150W-04PM	150	18000	45°/60°/ 90°/120°	85-265VAC	0.95	3000K/ 4000K/ 5000K/ 6000K	IP65	45°:Φ370×H520 60°:Φ350×H495 90°:Φ350×H475 120°:Φ435×H450
ENHB-180W-04PM	180	21600	45°/60°/ 90°/120°	85-265VAC	0.95	3000K/ 4000K/ 5000K/ 6000K	IP65	
ENHB-200W-04PM	200	24000	45°/60°/ 90°/120°	85-265VAC	0.95	3000K/ 4000K/ 5000K/ 6000K	IP65	
ENHB-240W-04PM	240	28800	45°/60°/ 90°/120°	85-265VAC	0.95	3000K/ 4000K/ 5000K/ 6000K	IP65	45°:Φ370×H538 60°:Φ350×H513 90°:Φ350×H493 120°:Φ435×H468
ENHB-300W-04PM	300	36000	45°/60°/ 90°/120°	85-265VAC	0.95	3000K/ 4000K/ 5000K/ 6000K	IP65	



PHILIPS
LUMILEDS





Integrated LED High Bay Light

PHILIPS
LUMILEDS



Model No.	Power (W)	Lumen (LM)	Beam Angle	Input Voltage	PF	Color	IP Rating	Product Dimension (mm)
ENHB-150W-03MW	150	16500	25°/60°/90°	85-265VAC	0.95	3000K/ 4000K/ 6000K	IP65	Φ396.5 L260 W320 H534.5
ENHB-200W-03MW	200	22000	25°/60°/90°	85-265VAC	0.95	3000K/ 4000K/ 6000K	IP65	Φ396.5 L260 W320 H534.5
ENHB-300W-03MW	300	33000	25°/60°/90°	85-265VAC	0.95	3000K/ 4000K/ 6000K	IP65	Φ396.5 L301 W320 H534.5
ENHB-400W-03MW	400	44000	25°/60°/90°	85-265VAC	0.95	3000K/ 4000K/ 6000K	IP65	Φ396.5 L342.5 W320 H534.5
ENHB-500W-03MW	500	55000	25°/60°/90°	85-265VAC	0.95	3000K/ 4000K/ 6000K	IP65	Φ396.5 L383.5 W320 H534.5

Modular LED Street Light



PHILIPS
LUMILEDS



Model No.	Power (W)	Input Voltage	Lumen (LM)	Color	Beam Angle	PF	IP Rating	Product Dimension (mm)
ENSL-30W-06MW	30	85-265VAC	3600	3000K/ 4000K/ 5000K 6000K	140°H x 70°V	0.95	IP66	366*135* 85
ENSL-40W-06MW	40	85-265VAC	4800	3000K/ 4000K/ 5000K 6000K	140°H x 70°V	0.95	IP66	366*135* 90
ENSL-60W-06MW	60	85-265VAC	7200	3000K/ 4000K/ 5000K 6000K	140°H x 70°V	0.95	IP66	432*160* 90
ENSL-90W-06MW	90	85-265VAC	10800	3000K/ 4000K/ 5000K 6000K	140°H x 70°V	0.95	IP66	432*160* 90
ENSL-120W-06MW	120	85-265VAC	14400	3000K/ 4000K/ 5000K 6000K	140°H x 70°V	0.95	IP66	632*215* 90
ENSL-150W-06MW	150	85-265VAC	18000	3000K/ 4000K/ 5000K 6000K	140°H x 70°V	0.95	IP66	632*215* 90

TUV Listed COB LED Street Light



BRIDGELUX

MW
MEAN WELL
LED DRIVER



Model No.	Power (W)	Lumen (LM)	Beam Angle	Input Voltage	PF	Color	IP Rating	Product Dimension (mm)
ENSL-30W-04	30	3000	130°/140°	90-305VAC	0.95	2700-3500K/ 3500-5500K/ 5500-6500K	IP65	650×236×117
ENSL-40W-04	40	4000	130°/140°	90-305VAC	0.95		IP65	650×236×117
ENSL-50W-04	50	5000	130°/140°	90-305VAC	0.95	2700-3500K/ 3500-5500K/ 5500-6500K	IP65	650×236×117
ENSL-60W-04	60	6000	130°/140°	90-305VAC	0.95		IP65	650×236×117
ENSL-80W-04	80	8000	130°/140°	90-305VAC	0.95	2700-3500K/ 3500-5500K/ 5500-6500K	IP65	800×291×132
ENSL-100W-04	100	10000	130°/140°	90-305VAC	0.95		IP65	800×291×132
ENSL-120W-04	120	12000	130°/140°	90-305VAC	0.95	2700-3500K/ 3500-5500K/ 5500-6500K	IP65	800×291×132
ENSL-150W-04	150	15000	130°/140°	90-305VAC	0.95		IP65	950×364×104
ENSL-180W-04	180	18000	130°/140°	90-305VAC	0.95		IP65	950×364×104

LED Explosion Proof Flood Light



BRIDGELUX

MW
MEAN WELL
LED DRIVER



Model No.	Input Voltage	Power (W)	Lumen (LM)	Beam Angle	Color	IP Rating	Explosion-Proof Rating	Product Dimension (mm)
ENEP-20W-01	100-240VAC/ 12VDC/24VDC	20	1800	60°/90°/120°	3000-3500K/ 4000-4500K/ 6000-6500K	IP67	Ex dIICT6	Φ220×276
ENEP-30W-01	100-240VAC/ 12VDC/24VDC	30	2700	60°/90°/120°	3000-3500K/ 4000-4500K/ 6000-6500K	IP67	Ex dIICT6	Φ220×276
ENEP-40W-01	100-240VAC/ 12VDC/24VDC	40	3600	60°/90°/120°	3000-3500K/ 4000-4500K/ 6000-6500K	IP67	Ex dIICT6	Φ220×276
ENEP-50W-01	100-240VAC/ 24VDC/48VDC	50	4000	60°/90°/120°	3000-3500K/ 4000-4500K/ 6000-6500K	IP67	Ex dIICT6	Φ300×230
ENEP-60W-01	100-240VAC/ 12VDC/24VDC	60	4800	60°/90°/120°	3000-3500K/ 4000-4500K/ 6000-6500K	IP67	Ex dIICT6	Φ300×230
ENEP-70W-01	100-240VAC/ 24VDC	70	5600	60°/90°/120°	3000-3500K/ 4000-4500K/ 6000-6500K	IP67	Ex dIICT6	Φ300×230
ENEP-80W-01	100-240VAC/ 24VDC	80	6400	60°/90°/120°	3000-3500K/ 4000-4500K/ 6000-6500K	IP67	Ex dIICT6	Φ300×230
ENEP-90W-01	100-240VAC	90	7200	60°/90°/120°	3000-3500K/ 4000-4500K/ 6000-6500K	IP67	Ex dIICT6	Φ300×230
ENEP-100W-01	100-240VAC	100	8000	60°/90°/120°	3000-3500K/ 4000-4500K/ 6000-6500K	IP67	Ex dIICT6	Φ300×230
ENEP-110W-01	100-240VAC	110	8800	60°/90°/120°	3000-3500K/ 4000-4500K/ 6000-6500K	IP67	Ex dIICT6	Φ300×230
ENEP-120W-01	100-240VAC	120	9600	60°/90°/120°	3000-3500K/ 4000-4500K/ 6000-6500K	IP67	Ex dIICT6	Φ300×230
ENEP-130W-01	100-240VAC	130	10400	60°/80°/100°	3000-3500K/ 4000-4500K/ 6000-6500K	IP67	Ex dIICT6	Φ360×240
ENEP-140W-01	100-240VAC	140	11200	60°/80°/100°	3000-3500K/ 4000-4500K/ 6000-6500K	IP67	Ex dIICT6	Φ360×240
ENEP-150W-01	100-240VAC	150	13500	60°/80°/100°	3000-3500K/ 4000-4500K/ 6000-6500K	IP67	Ex dIICT6	Φ360×240



BRIDGELUX



Portable LED Explosion Proof Flood Light

Model No.	Input Voltage	Power (W)	Lumen (LM)	Beam Angle	Color	IP Rating	Explosion-Proof Rating	Product Dimension (mm)
ENEP-20W-04	100-240VAC/12VDC/24VDC	20	1800	60°/90°/120°	3000-3500K/4000-4500K/6000-6500K	IP67	Ex dIICT6	267×240×516
ENEP-30W-04	100-240VAC/12VDC/24VDC	30	2700	60°/90°/120°	3000-3500K/4000-4500K/6000-6500K	IP67	Ex dIICT6	267×240×516
ENEP-40W-04	100-240VAC/12VDC/24VDC	40	3600	60°/90°/120°	3000-3500K/4000-4500K/6000-6500K	IP67	Ex dIICT6	267×240×516
ENEP-50W-04	100-240VAC/24VDC/48VDC	50	4000	60°/90°/120°	3000-3500K/4000-4500K/6000-6500K	IP67	Ex dIICT6	267×240×516
ENEP-60W-04	100-240VAC/12VDC/24VDC	60	4800	60°/90°/120°	3000-3500K/4000-4500K/6000-6500K	IP67	Ex dIICT6	267×240×516
ENEP-70W-04	100-240VAC/24VDC	70	5600	60°/90°/120°	3000-3500K/4000-4500K/6000-6500K	IP67	Ex dIICT6	267×240×516
ENEP-80W-04	100-240VAC/24VDC	80	6400	60°/90°/120°	3000-3500K/4000-4500K/6000-6500K	IP67	Ex dIICT6	267×240×516
ENEP-90W-04	100-240VAC	90	7200	60°/90°/120°	3000-3500K/4000-4500K/6000-6500K	IP67	Ex dIICT6	267×240×516
ENEP-100W-04	100-240VAC	100	8000	60°/90°/120°	3000-3500K/4000-4500K/6000-6500K	IP67	Ex dIICT6	267×240×516
ENEP-110W-04	100-240VAC	110	8800	60°/90°/120°	3000-3500K/4000-4500K/6000-6500K	IP67	Ex dIICT6	267×240×516
ENEP-120W-04	100-240VAC	120	9600	60°/90°/120°	3000-3500K/4000-4500K/6000-6500K	IP67	Ex dIICT6	267×240×516

LED Explosion Proof Street Light

Model No.	Input Voltage	Power (W)	Lumen (LM)	Beam Angle	Color	IP Rating	Explosion-Proof Rating	Product Dimension (mm)
ENEP-20W-05	100-240VAC/12VDC/24VDC	20	1800	60°/90°/120°	3000-3500K/4000-4500K/6000-6500K	IP67	Ex dIICT6	800×290×166
ENEP-30W-05		30	2700	60°/90°/120°	3000-3500K/4000-4500K/6000-6500K	IP67	Ex dIICT6	800×290×166
ENEP-40W-05		40	3600	60°/90°/120°	3000-3500K/4000-4500K/6000-6500K	IP67	Ex dIICT6	800×290×166
ENEP-50W-05	100-240VAC/24VDC/48VDC	50	4000	60°/90°/120°	3000-3500K/4000-4500K/6000-6500K	IP67	Ex dIICT6	1020×380×230
ENEP-60W-05	100-240VAC/12VDC/24VDC	60	4800	60°/90°/120°	3000-3500K/4000-4500K/6000-6500K	IP67	Ex dIICT6	1020×380×230
ENEP-70W-05	100-240VAC/24VDC	70	5600	60°/90°/120°	3000-3500K/4000-4500K/6000-6500K	IP67	Ex dIICT6	1020×380×230
ENEP-80W-05		80	6400	60°/90°/120°	3000-3500K/4000-4500K/6000-6500K	IP67	Ex dIICT6	1020×380×230
ENEP-90W-05	100-240VAC	90	7200	60°/90°/120°	3000-3500K/4000-4500K/6000-6500K	IP67	Ex dIICT6	1020×380×230
ENEP-100W-05	100-240VAC	100	8000	60°/90°/120°	3000-3500K/4000-4500K/6000-6500K	IP67	Ex dIICT6	1020×380×230
ENEP-110W-05	100-240VAC	110	8800	60°/90°/120°	3000-3500K/4000-4500K/6000-6500K	IP67	Ex dIICT6	1020×380×230
ENEP-120W-05	100-240VAC	120	9600	60°/90°/120°	3000-3500K/4000-4500K/6000-6500K	IP67	Ex dIICT6	1020×380×230
ENEP-130W-05	100-240VAC	130	11700	60°/90°/120°	3000-3500K/4000-4500K/6000-6500K	IP67	Ex dIICT6	1020×380×230
ENEP-140W-05	100-240VAC	140	12600	60°/90°/120°	3000-3500K/4000-4500K/6000-6500K	IP67	Ex dIICT6	1020×380×230
ENEP-150W-05	100-240VAC	150	13500	60°/90°/120°	3000-3500K/4000-4500K/6000-6500K	IP67	Ex dIICT6	1020×380×230
ENEP-160W-05	100-240VAC	160	14400	60°/90°/120°	3000-3500K/4000-4500K/6000-6500K	IP67	Ex dIICT6	1020×380×230
ENEP-170W-05	100-240VAC	170	15300	60°/90°/120°	3000-3500K/4000-4500K/6000-6500K	IP67	Ex dIICT6	1020×380×230
ENEP-180W-05	100-240VAC	180	16200	60°/90°/120°	3000-3500K/4000-4500K/6000-6500K	IP67	Ex dIICT6	1020×380×230
ENEP-190W-05	100-240VAC	190	17100	60°/90°/120°	3000-3500K/4000-4500K/6000-6500K	IP67	Ex dIICT6	1020×380×230
ENEP-200W-05	100-240VAC	200	18000	60°/90°/120°	3000-3500K/4000-4500K/6000-6500K	IP67	Ex dIICT6	1020×380×230



BRIDGELUX



Eneltec Group

Headquarters

Eneltec (Israel) Ltd.

Add: 2 Habonim St', P.O.Box 8765, Netanya 42504, Israel

Tel: 972-9-8855167

Fax: 972-9-8650271

Global Marketing Center

Eneltec (Shanghai) Co., Ltd.

Add: Rm 1629, No.289, Wujin Rd, Shanghai, China, 200080

Tel: 86-21-33811921 , 33811922

Fax: 86-21-33811923

Website: www.eneltec-led.com

E-mail:

General Information: info@eneltec-led.com

Sales Department: sales@eneltec-led.com

Service Department: service@eneltec-led.com